

HiSOLO

Designed to meet variety of needs

It is more than a SOLAR SURVEILLANCE TOWER, it is MOBILE SOLAR ENERGY feature with:

- Communication
- Power Supplying
- Lighting



YOUR SECURITY OUR PRIORITY



What makes **HiSOLO** different ?

Because it is simply better by design

- Self-powered, movable, wide application
- Smarter HiEYE management software
- Rotated and tilted solar panels
More efficient use of solar power
- Larger capacity, longer life
- Higher mast, wider monitoring coverage
- Built-in design, no worry about damage
- More container loading, less freight
- Multiple business models: Rental, Sale, Own, Lease





SELF-POWERED MOVABLE WIDE APPLICATIONS



SMART HIEYE MANAGEMENT SOFTWARE





ROTATED AND TILTED SOLAR PANEL MORE EFFICIENT USE OF SOLAR POWER

LARGER
CAPACITY
LONGER LIFE

Consistently work

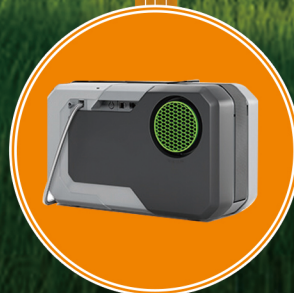
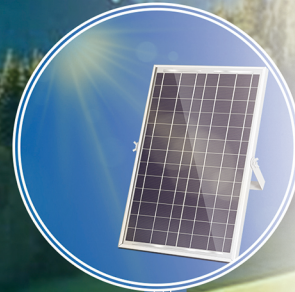
168

Hours for 60W.

Ultra large capacity

12000

Wh.



HISOLO
MULTI-CHARGING
SYSTEM

THREE-WAY OF CHARGING

Ensure the system operate perpetually

Where is the cable?



Others



BUILT-IN DESIGN TELESCOPIC MAST

No worry about damage or cutting of cable

MORE CONTAINER LOADING LESS FREIGHT

14units for 40' container, not 3units!





GET
RICH
WITH
LOW RISK

**RENTAL
SALE
OWN
LEASE**

Flexible and multiple business models
for low investment and high return

DATA



Models	BL2P-G9EHSS0P	BL2P-G7MHSS0B
Solar Panel Type	Monocrystalline Silicon Type, Dual Facial, Rotatable and Angle adjusted	
Solar Panel Wattage	2*600W	2*600W
Controller	Victron MPPT	Epever MPPT
Battery Capacity	12000Wh	9600Wh
System Voltage	DC24V	
Devices	CCTV Mounting Box For Surveillance System	
Cables	Built-in composite cable: Network Cable+Power Cable	
Telescopic Mast	9 Meters	7 Meters
Lifting System	Electric	Manual
AC Charger	1.5kW	
Trailer Type	US/EU/AU Standard, Signal Axle, Foldable Tow Bar, With Forklift Holes And Lift Rings	
Outrigger	4pcs Manual Outriggers, Foldable, Y Shape	
Working Temperature	-25°C-60°C	
Charging Time	8.5 Hours (Theoretical)	8.9 Hours (Theoretical)
Running Time	72 Hours for 133W	72 Hours for 106W
Options	Cameras, 4G Router,NVR,Speaker, Remote Control, Antenna, Inverter, 360° Rotation And 90° Tilt for lights,Dimmable Lights, Lithium Battery	
Options	3780*1675*3175mm	3270*1675*2975mm
Operate Dimensions	3270*1675*2975mm	3290*3245*7400mm
Gross Weight	1150KG	1070KG
Container Loading	20GP: 6 units, 40HQ: 14 Units	

MORE OPTIONS



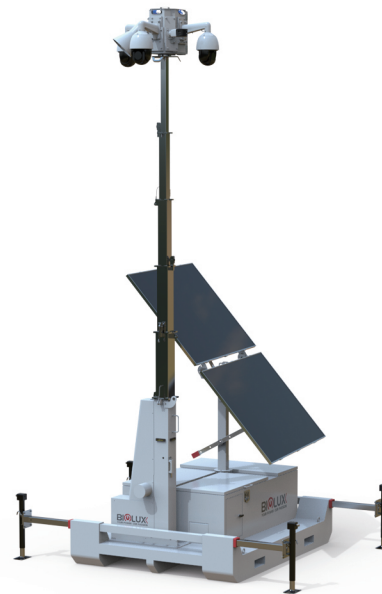
HiSOLO

CCTV Tower



HiSOLO

Light Tower



HiSKID

CCTV / Light Tower



HiMAST

Telescopic Mast

HiBOX

CCTV box

SOLUTIONS

MOBILE SOLAR TOWER

Rental. Sale. Own. Lease

BIGLUX develops and implements specific & innovative mobile solar tower and mobile solar generator solutions for different commercial and industrial applications. By adopting the latest renewable energy technologies, BIGLUX integrated solar and battery system to develop and implement the most energy saving renewable mobile solar power systems to work as solar surveillance tower, solar lighting tower, solar generator, solar telecom tower solutions for multiple applications:

- Outdoor Parking Lots
- Traffic Monitoring
- Construction Sites
- Emergency Rescue
- Public Security
- Sports and Events
- Forest Fire Prevention
- Military Bases
- Mining and Oil
- Refuse Disposal Plants
- Logistics Centers
- Defense Frontiers
- Airports
- Camping
- Agriculture
- Telecom
- Industry
- Data Centers



BIGLUX INNOVATION LTD

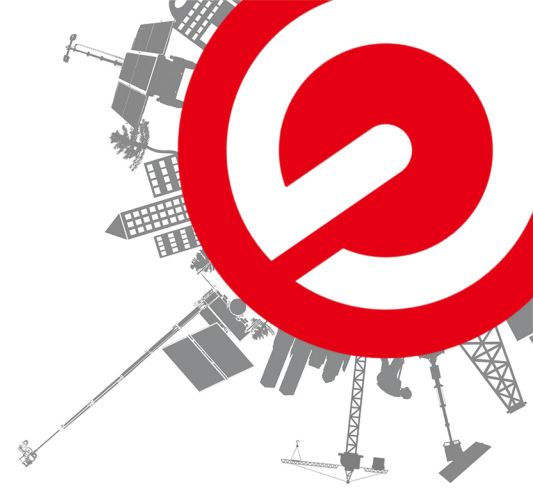
By adopting the latest SOLAR TRAILER and TOWER technology, BIGLUX develops and implements the most energy saving solar light tower, solar surveillance tower and other mobile power solutions for construction site, parking lot, sports, events and emergency applications etc.

5A WE HAVE

- A strong expertise in SOLAR TRAILER and MOBILE POWER latest technologies
- A broad experience in SOLAR TRAILER and MOBILE POWER applications
- An insatiable thirst for smart intelligent controlled SOLAR TOWER system
- A background of over 10 years' experience in SOLAR and MOBILE TRAILER industry
- A great heart of contribution to the world by renewable energy

Headquarter in ShenZhen, China, BIGLUX services clients from all over the world.





Website:www.bigluxsolar.com



WhatsApp:+86 188 1878 5601
Email:info@bigluxsolar.com



Address:Building 6, No. 34, GuangHui Rd, Longteng Community,
Shiyan Street, Bao'an District, Shenzhen,China



NOTE: All information in this document is substantially correct at time of printing and may be altered subsequently, BIGLUX reserve the right of final explanation and alteration without notice any parties.